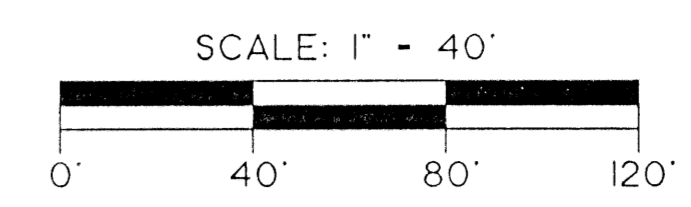
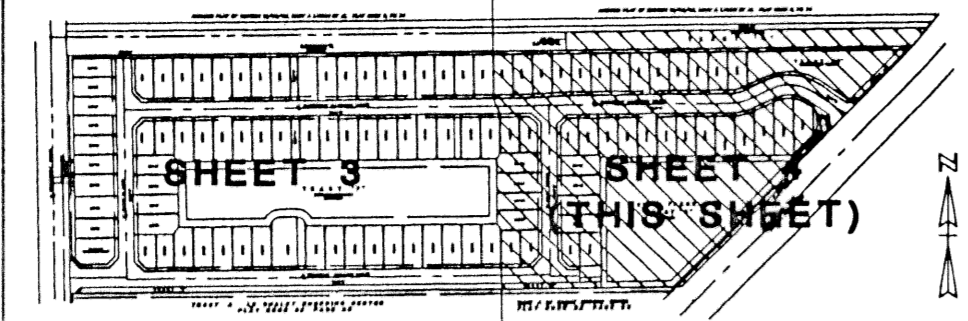
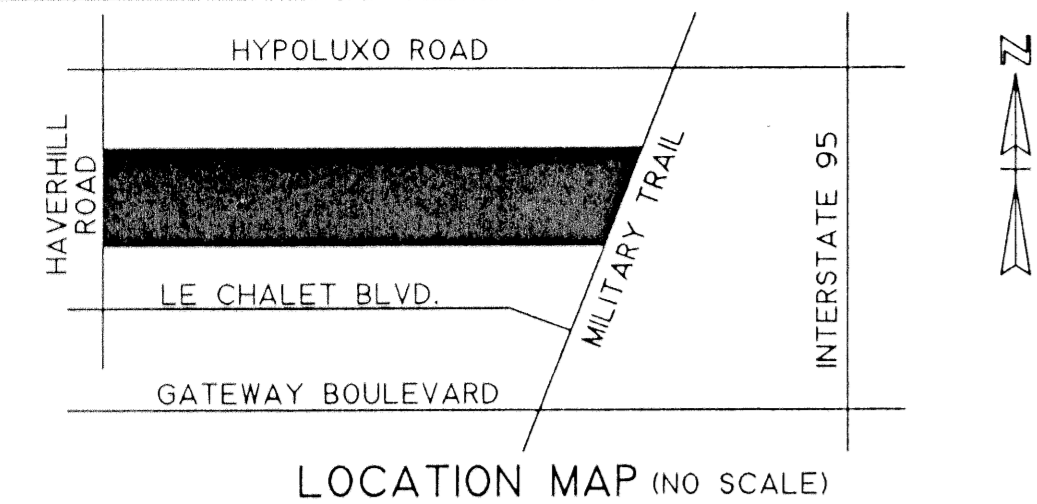


GATEWAY GARDENS, P.U.D.

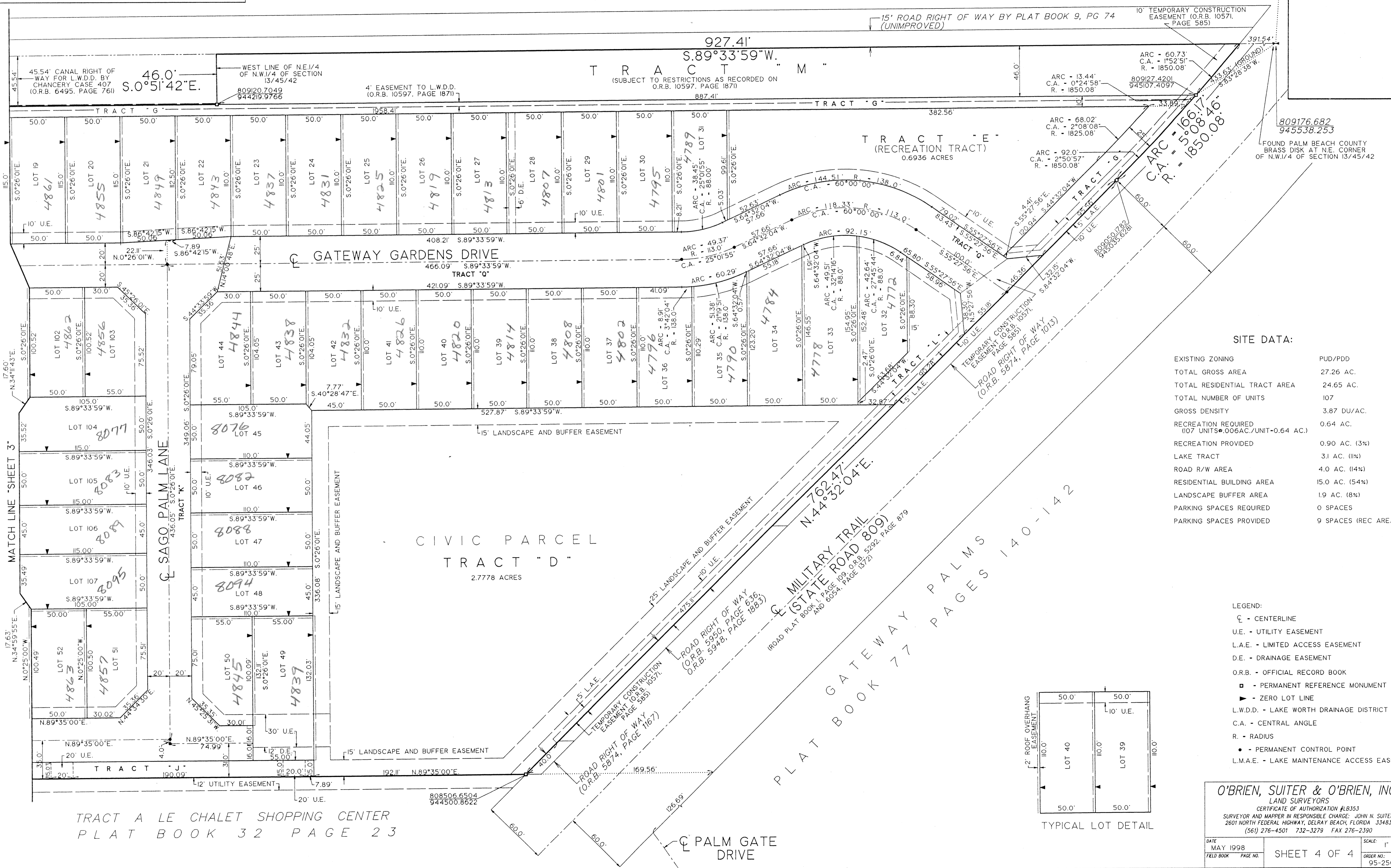
BEING A PORTION OF THE NORTHWEST QUARTER (N.W.1/4)
OF SECTION 13, TOWNSHIP 45 SOUTH, RANGE 42 EAST,
PALM BEACH COUNTY, FLORIDA.

SHEET 4 OF 4

AMENDED PLAT OF SECTION 12/45/42, MARY A LYMAN ET AL PLAT BOOK 9, PG 74



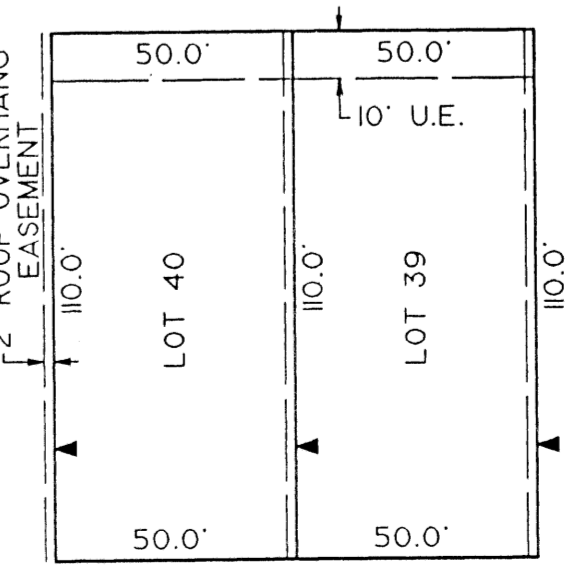
FOUND PALM BEACH COUNTY BRASS DISK "PRINGLE"
811836.346
945696.626



SITE DATA:

EXISTING ZONING	PUD/PDD
TOTAL GROSS AREA	27.26 AC.
TOTAL RESIDENTIAL TRACT AREA	24.65 AC.
TOTAL NUMBER OF UNITS	107
GROSS DENSITY	3.87 DU/AC.
RECREATION REQUIRED (107 UNITS * 0.006 AC./UNIT = 0.64 AC.)	0.64 AC.
RECREATION PROVIDED	0.90 AC. (3%)
LAKE TRACT	3.1 AC. (11%)
ROAD R/W AREA	4.0 AC. (14%)
RESIDENTIAL BUILDING AREA	15.0 AC. (54%)
LANDSCAPE BUFFER AREA	1.9 AC. (8%)
PARKING SPACES REQUIRED	0 SPACES
PARKING SPACES PROVIDED	9 SPACES (REC AREA)

- LEGEND:**
- ⊕ - CENTERLINE
 - U.E. - UTILITY EASEMENT
 - L.A.E. - LIMITED ACCESS EASEMENT
 - D.E. - DRAINAGE EASEMENT
 - O.R.B. - OFFICIAL RECORD BOOK
 - ▣ - PERMANENT REFERENCE MONUMENT (P.R.M.)
 - ▴ - ZERO LOT LINE
 - L.W.D.D. - LAKE WORTH DRAINAGE DISTRICT
 - C.A. - CENTRAL ANGLE
 - R. - RADIUS
 - - PERMANENT CONTROL POINT
 - L.M.A.E. - LAKE MAINTENANCE ACCESS EASEMENT



O'BRIEN, SUITER & O'BRIEN, INC.
LAND SURVEYORS
CERTIFICATE OF AUTHORIZATION #LB353
SURVEYOR AND MAPPER IN RESPONSIBLE CHARGE: JOHN N. SUITER
2601 NORTH FEDERAL HIGHWAY, DELRAY BEACH, FLORIDA 33483
(561) 276-4501 732-3279 FAX 276-2390

SUBDIVISION: Gateway Gardens
PAGE: 23
FLOOD MAP: 710B
ZONING: PUD/TOR
QUAD: 34
SE: 97-85
TAX: 441
PUD NAME: Gateway Gardens

TRACT A LE CHALET SHOPPING CENTER
PLAT BOOK 32 PAGE 23